

# Longdon Hall School

# Weekly Bulletin

**Week Ending: 24/04/2026**

## Parent Reminders:

Year 9 GCSE Options Evening will take place on Tuesday 5th May 2026, starting at 3:30pm until 5pm.



## Leadership Message:

It has been another fantastic week at Longdon Hall School. The students have taken part in a wide range of activities including celebrating Earth Day which enabled the students to develop their teamwork and communication skills. Life skills lessons are also an important part of our curriculum. This week some students have developed their budgeting and communication skills whilst visiting shops. Other students have learnt about the importance of nature and have undertaken horticulture activities whereby they have learnt how to plant, water and maintain a garden. These activities have developed the students' mathematical skills too. The Primary students have enjoyed getting to know their peers who have recently joined the school and the students have excelled in their maths lessons this week. It has been great getting to know the students at Longdon Hall School; I look forward to meeting parents and carers at the Year 9 GCSE Options Evening on Tuesday 5th May and at our charity event on 22nd May.

Kind regards Suzanne

# Longdon Hall School Weekly Bulletin



Longdon Hall  
School

**SMSC:**

**JOIN US**

Meet our new  
Headteacher Suzanne  
Whiston & raise money for  
a fantastic charity!

22nd May 2026

1-2.30pm

Parents can take children home with them if they wish.



# Longdon Hall School

## Weekly Bulletin



Longdon Hall  
School

### SMSC:

Dear Year 9 Parents and Carers,

Following recent communication, this is a reminder that our Year 9 GCSE Options Evening will take place on Tuesday 5th May 2026, starting at 3:30pm until 5pm.

The evening is an important opportunity for students and families to learn more about the GCSE subjects available, meet staff from different departments, and gain guidance on the options process as students begin to make their subject choices for Key Stage 4. It is vital that our students have a clear understanding of each of the requirements of the qualifications they wish to choose before beginning them in the new academic year.

An options booklet, detailing all choices available to your child will be available to take home from this event. We strongly encourage all Year 9 students and their parents/carers to attend.

If you have any questions in the meantime, please do not hesitate to contact the school via the main office.

Kind regards,  
Leah Ward.

# Longdon Hall School

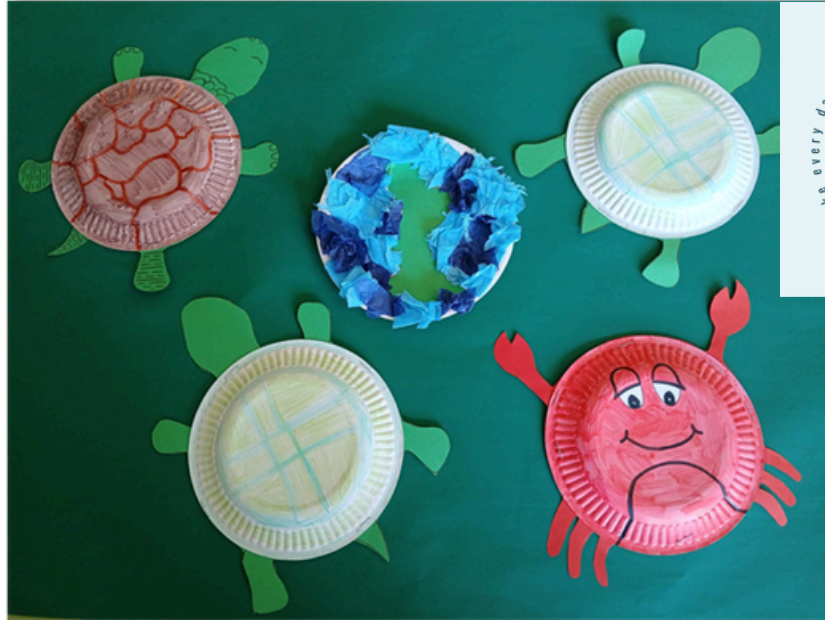
## Weekly Bulletin



Longdon Hall  
School

**SMSC:**

Thank you Rico &  
Leah for your  
wonderful Art  
contributions!



Earth Day is a global opportunity to recognise the importance of protecting our planet, raising awareness of environmental challenges, and encouraging positive action. While this may seem like a broad, global issue, it has a direct and valuable link to the experiences and development of the children and young people at our school.

Celebrating Earth Day also gives us a chance to promote teamwork, communication, and shared goals in a way that feels inclusive and accessible - linking directly to some of the values we will be covering in PD over the coming weeks. It allows our children and young people to succeed in different ways. Importantly, involvement in something bigger than themselves can help our students to develop empathy - not just for others, but for their environment.

# Longdon Hall School Weekly Bulletin



Longdon Hall  
School

## Curriculum updates:

This week in Primary we have had fun getting to know our new students. We have worked hard learning about decimals in maths. We have also developed friendship groups through Lego therapy, and we have been refining our skills in the DT room.



# Longdon Hall School

## Weekly Bulletin



Longdon Hall  
School

### Curriculum updates:

The Jets class have been working together as a team to build their own base in the forest. Collectively, they assigned each student a job based on individual skills. Using items they found lying around (and some bits from Dave's shed!) it is beginning to look rather homely. We can't wait to see the end result!



# Longdon Hall School

# Weekly Bulletin



Longdon Hall School

## Curriculum updates:

The Jets class have been working incredibly hard in maths this week. They have been learning about rounding numbers and using estimations.

Workout Click here Scan here

Question 1: Round each of the following numbers to 1 significant figure  
 (a) 3640 (b) 2220 (c) 8380 (d) 6870 (e) 9700 (f) 12000 (g) 51900  
 (h) 26000 (i) 741700 (j) 888200 (k) 408400 (l) 650700 (m) 148100 (n) 97200  
 (o) 390400 (p) 540000 (q) 412500 (r) 273200 (s) 634900 (t) 809900 (u) 649900

Question 2: Round each of the following numbers to 1 significant figure  
 (a) 12000 (b) 46000 (c) 74500 (d) 83771 (e) 95120 (f) 330000  
 (g) 863000 (h) 248220 (i) 489331 (j) 13800000

Question 3: Round each of the following numbers to 1 significant figure  
 (a) 2.9 (b) 3.2 (c) 5.7 (d) 46.81 (e) 57.25 (f) 80.96 (g) 94.9  
 (h) 115.1 (i) 83.82 (j) 13.65 (k) 66.321 (l) 5501.4 (m) 48.02 (n) 99.9

Question 4: Round each of the following numbers to 1 significant figure  
 (a) 0.54 (b) 0.86 (c) 0.161 (d) 0.048 (e) 0.0943 (f) 0.0071 (g) 0.003  
 (h) 0.06482 (i) 0.8835 (j) 0.00064 (k) 0.00098 (l) 0.0002789 (m) 0.00002789

Question 5: Round each of the following numbers to 2 significant figures  
 (a) 844 (b) 665 (c) 129 (d) 2840 (e) 9250 (f) 1359 (g) 298  
 (h) 504 (i) 999 (j) 3841 (k) 48500 (l) 13.7 (m) 58.3 (n) 49.6  
 (o) 1.41 (p) 42.64 (q) 0.3189 (r) 22490 (s) 186110 (t) 0.04912 (u) 4.98  
 (v) 997826 (w) 2.99517 (x) 0.06014  
 © CORNBETTMATHS 2017

Workout Click here Scan here

Question 1: Round each of the following numbers to 1 significant figure  
 (a) 3640 (b) 2220 (c) 8380 (d) 6870 (e) 9700 (f) 12000 (g) 51900  
 (h) 26000 (i) 741700 (j) 888200 (k) 408400 (l) 650700 (m) 148100 (n) 97200  
 (o) 390400 (p) 540000 (q) 412500 (r) 273200 (s) 634900 (t) 809900 (u) 649900

Question 2: Round each of the following numbers to 1 significant figure  
 (a) 12000 (b) 46000 (c) 74500 (d) 83771 (e) 95120 (f) 330000  
 (g) 863000 (h) 248220 (i) 489331 (j) 13800000

Question 3: Round each of the following numbers to 1 significant figure  
 (a) 2.9 (b) 3.2 (c) 5.7 (d) 46.81 (e) 57.25 (f) 80.96 (g) 94.9  
 (h) 115.1 (i) 83.82 (j) 13.65 (k) 66.321 (l) 5501.4 (m) 48.02 (n) 99.9

Question 4: Round each of the following numbers to 1 significant figure  
 (a) 0.54 (b) 0.86 (c) 0.161 (d) 0.048 (e) 0.0943 (f) 0.0071 (g) 0.003  
 (h) 0.06482 (i) 0.8835 (j) 0.00064 (k) 0.00098 (l) 0.0002789 (m) 0.00002789

Question 5: Round each of the following numbers to 2 significant figures  
 (a) 844 (b) 665 (c) 129 (d) 2840 (e) 9250 (f) 1359 (g) 298  
 (h) 504 (i) 999 (j) 3841 (k) 48500 (l) 13.7 (m) 58.3 (n) 49.6  
 (o) 1.41 (p) 42.64 (q) 0.3189 (r) 22490 (s) 186110 (t) 0.04912 (u) 4.98  
 (v) 997826 (w) 2.99517 (x) 0.06014  
 © CORNBETTMATHS 2017

Question 1: Work out an estimate to each of the following  
 (a)  $196 + 397$  (b)  $578 + 720$  (c)  $612 - 114$  (d)  $4998 - 592$   
 (e)  $1905 - 370$  (f)  $8.31 + 9.74$  (g)  $50.6 - 5.25$  (h)  $4634 + 98.1$

Question 2: Estimate the answers to the following  
 (a)  $2.1 \times 6.8$  (b)  $5.7 \times 7.2$  (c)  $38 \times 22$  (d)  $41 \times 79$   
 (e)  $56.2 \times 11.52$  (f)  $5.84 \times 32.02$  (g)  $27 \times 304$  (h)  $195 \times 92$   
 (i)  $3025 \div 2.3$  (j)  $1.79 \times 8311$  (k)  $48.55 \div 5.3 \times 7.6$

Question 3: Work out an estimate to each division  
 (a)  $61.2 \div 10.13$  (b)  $59.62 \div 3.93$  (c)  $6.87 \div 9.79$  (d)  $403.8 \div 21.51$   
 (e)  $900.41 \div 59.75$  (f)  $7018.3 \div 5.281$  (g)  $703 \div 2.04$  (h)  $9850 \div 38.6$  (i)  $314 \div 2008$

Question 4: Work out estimates to the following  
 (a)  $\frac{201 + 602}{102}$  (b)  $\frac{8019}{711 - 508}$  (c)  $\frac{7.14 + 16.88}{10.96 - 4.85}$   
 (d)  $\frac{31 - 12}{20 \div 12}$  (e)  $\frac{3890}{9.8 \times 51}$  (f)  $\frac{42 \times 198}{10.3 \times 7.8}$

© CORNBETTMATHS 2018

Workout Click here Scan here

Question 1: Round each of the following numbers to 1 significant figure  
 (a) 3640 (b) 2220 (c) 8380 (d) 6870 (e) 9700 (f) 12000 (g) 51900  
 (h) 26000 (i) 741700 (j) 888200 (k) 408400 (l) 650700 (m) 148100 (n) 97200  
 (o) 390400 (p) 540000 (q) 412500 (r) 273200 (s) 634900 (t) 809900 (u) 649900

Question 2: Round each of the following numbers to 1 significant figure  
 (a) 12000 (b) 46000 (c) 74500 (d) 83771 (e) 95120 (f) 330000  
 (g) 863000 (h) 248220 (i) 489331 (j) 13800000

Question 3: Round each of the following numbers to 1 significant figure  
 (a) 2.9 (b) 3.2 (c) 5.7 (d) 46.81 (e) 57.25 (f) 80.96 (g) 94.9  
 (h) 115.1 (i) 83.82 (j) 13.65 (k) 66.321 (l) 5501.4 (m) 48.02 (n) 99.9

Question 4: Round each of the following numbers to 1 significant figure  
 (a) 0.54 (b) 0.86 (c) 0.161 (d) 0.048 (e) 0.0943 (f) 0.0071 (g) 0.003  
 (h) 0.06482 (i) 0.8835 (j) 0.00064 (k) 0.00098 (l) 0.0002789 (m) 0.00002789

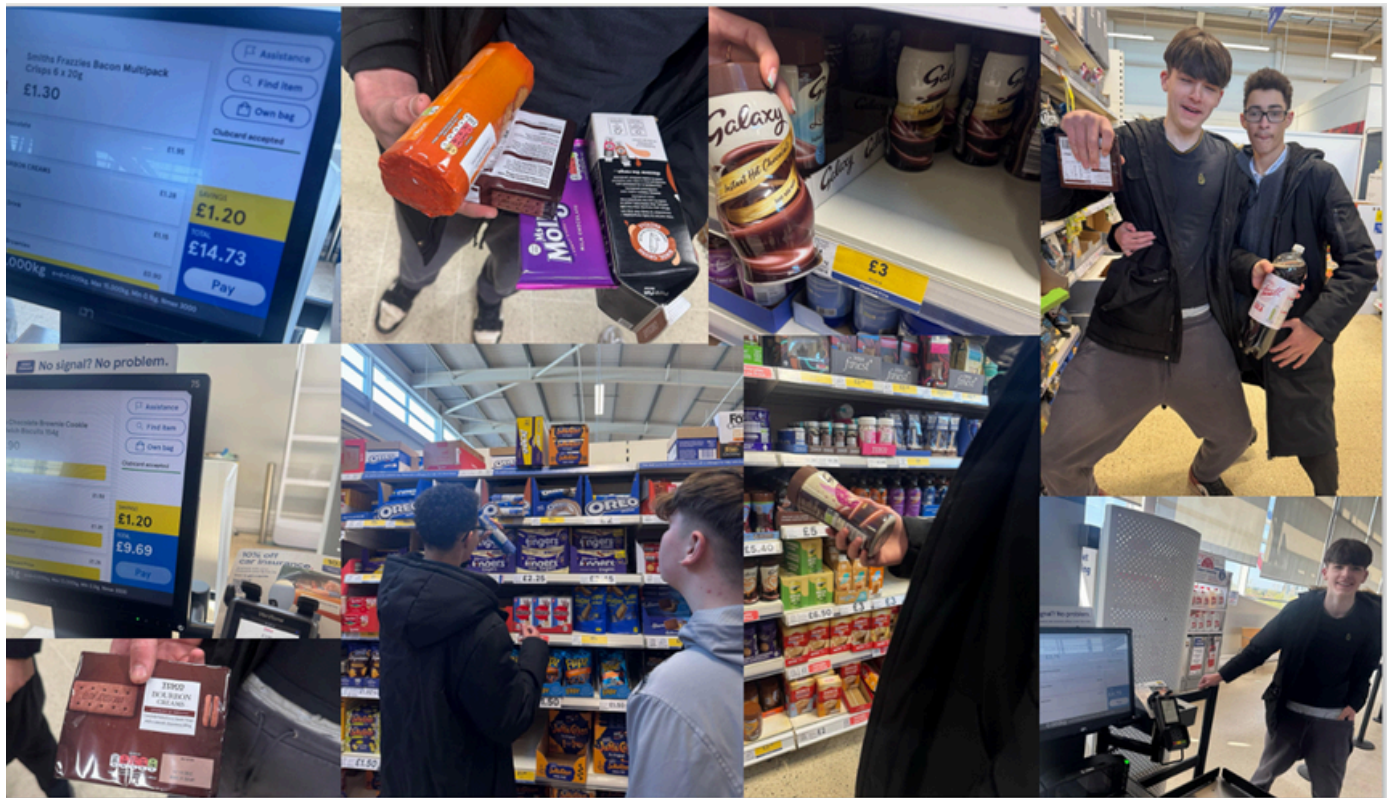
Question 5: Round each of the following numbers to 2 significant figures  
 (a) 844 (b) 665 (c) 129 (d) 2840 (e) 9250 (f) 1359 (g) 298  
 (h) 504 (i) 999 (j) 3841 (k) 48500 (l) 13.7 (m) 58.3 (n) 49.6  
 (o) 1.41 (p) 42.64 (q) 0.3189 (r) 22490 (s) 186110 (t) 0.04912 (u) 4.98  
 (v) 997826 (w) 2.99517 (x) 0.06014  
 © CORNBETTMATHS 2017

# Longdon Hall School Weekly Bulletin



Longdon Hall  
School

## Curriculum updates:



A life skills lesson centered around a trip to the supermarket gives students a practical and engaging way to build independence. As they navigate the aisles, students learn how to read labels, compare prices, and make choices within a budget. They practice essential numeracy skills by calculating totals and handling money, while also developing communication skills when interacting with staff or asking for help. Beyond academics, the experience encourages decision-making, responsibility, and awareness of different food options. By connecting classroom learning to real-world situations, the supermarket becomes a meaningful environment where students gain confidence and essential skills for everyday life.

# Longdon Hall School Weekly Bulletin

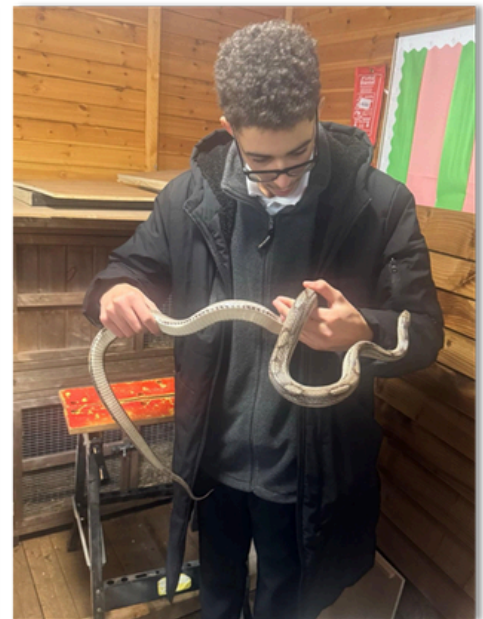


Longdon Hall  
School

## Curriculum updates:



Students have been making the most out of our Outdoor Education room in the Forest, by handling our corn snake 'Steve'. Both students encouraged each other to hold the snake and remained calm throughout. 'Steve' is enabling students who would not normally mix, to come together and bond.



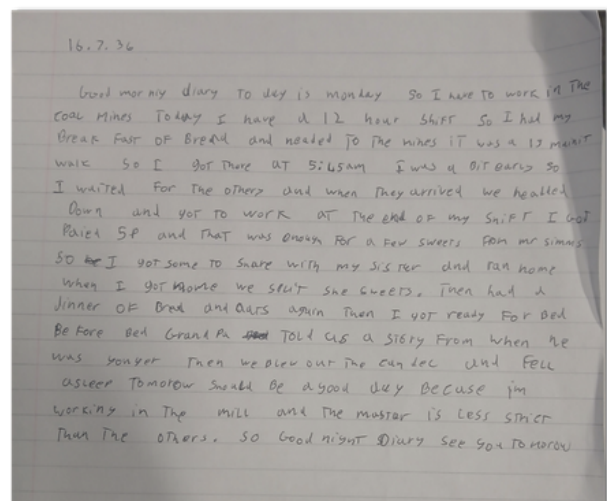
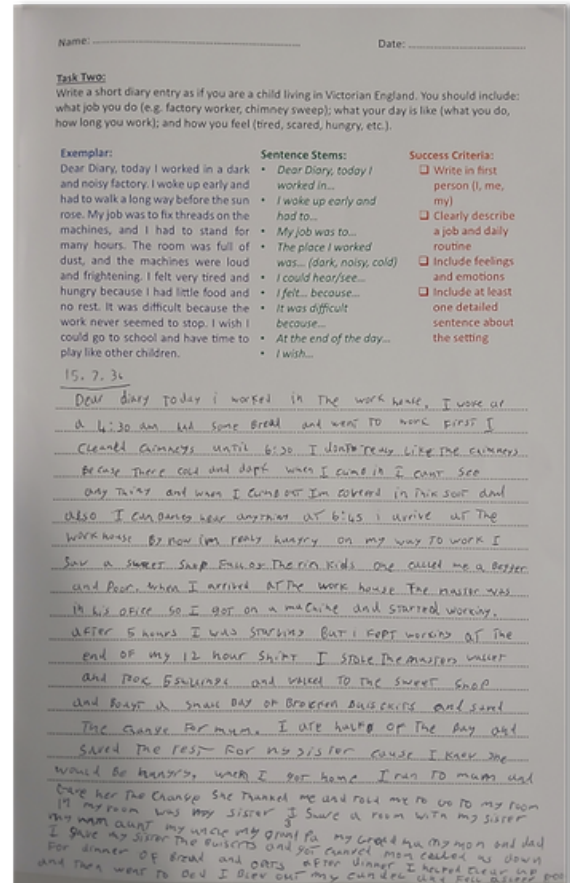
# Longdon Hall School Weekly Bulletin



Longdon Hall  
School

## Curriculum updates:

The Jets class have started their new topic in English which is looking at writers in the Victorian era. After learning about life in the Victorian times for children who had to work, the students had to create a diary entry imagining they were a child who had been to work and they had to describe what their day was like. Fantastic efforts all round!



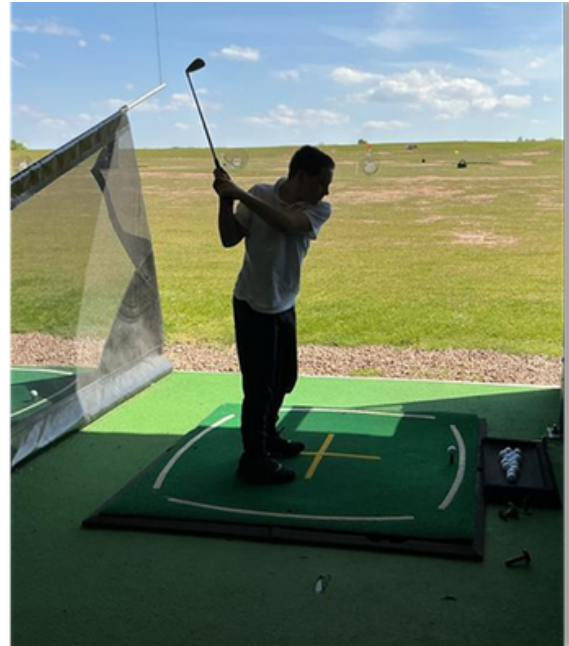
# Longdon Hall School

## Weekly Bulletin



Longdon Hall  
School

### Curriculum updates:



At the driving range Amber class have focused on precision, whilst practicing their swings. With each hit, they adjusted their stance and grip, watching golf balls arc into the distance as they honed their technique. Together, the activities balanced excitement and concentration, giving everyone a chance to build both skill and camaraderie.



# Longdon Hall School Weekly Bulletin



Longdon Hall  
School

## Curriculum updates:

We have received a very generous donation of resources for horticulture from the Plant pot garden centre in Lichfield.



# Longdon Hall School

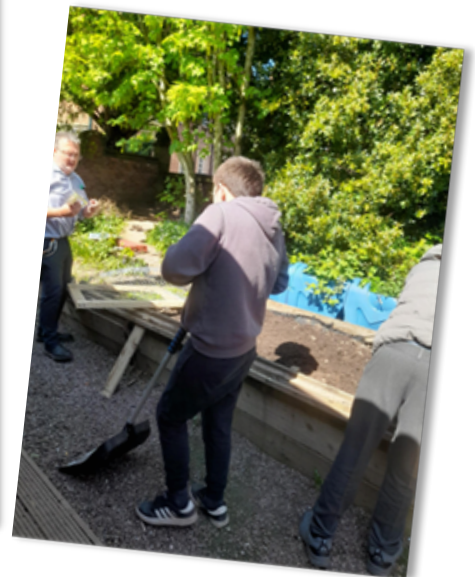
## Weekly Bulletin



Longdon Hall  
School

### Curriculum updates:

Horticulture plays an important role in our school by connecting students with nature while supporting both academic and personal development. Through activities like planting, watering, and maintaining a garden, students gain hands-on experience that reinforces concepts in science, environmental studies, and even mathematics. It also promotes responsibility and patience, as they learn to care for living things over time. Beyond the classroom, horticulture can improve wellbeing by reducing stress and encouraging outdoor activity. It also helps students understand sustainability, food sources, and the importance of caring for the environment, making it a valuable and enriching part of our school curriculum.



# Longdon Hall School

# Weekly Bulletin



Longdon Hall  
School

## Safeguarding updates:

The Hidden Dangers of Pinterest - White Hatter

Pinterest tends to fly under the radar. Unlike Instagram or TikTok, it has never attracted the same level of public concern, it's older, it's built around image collections, and most parents/carers consider it benign.

That perception is the problem. The White Hatter, a Canadian digital safety organisation, published a blog post recently after supporting two families whose children had shared intimate images via Pinterest's direct messaging feature. In both cases, the parents had no idea the platform had a messaging function.

It's a broader pattern worth exploring by parents/carers. Platforms that present as visual or creative tools like Pinterest, VSCO, Tumblr, Lemon8, Canva, Amino, often include messaging features that aren't obvious. The question worth considering, isn't "what app is my child using?" but "what can that app actually do?"

The article is a short, practical read:

<https://www.thewhitehatter.ca/post/what-parents-didn-t-know-about-pinterest-matters-for-all-caregivers>

# Longdon Hall School

# Weekly Bulletin



Longdon Hall  
School

## Lunch Menu: Wk commencing 27/04/26

Monday main: Lasagne & garlic bread, a vegetable side  
Dessert: Black forest gateaux

Tuesday main: Jerk chicken, rice & bread, a vegetable side  
Dessert: Fruit cocktail

Wednesday main: Sausage & Mash, Vegetables, Gravy  
Dessert: Sponge & custard

Thursday main: Chicken and stuffing hot large bap, chips and a  
vegetable side  
Dessert: Angel delight

Friday main: Lunch bag day - Pasta pot or Sausage roll, crisps, snack  
bar, cookie, drink options also available

Each day there are also the following options in addition  
to the main meal:

Jacket potato or Sweet potato

Hot ham baguette

Hot cheese baguette

Hot ham & cheese

Hot tuna & cheese baguette

Ham, tuna or cheese sandwich

Salad choices

Vegetarian options of the main course is also available daily