

WEEK ENDING 18.07.2025



Longdon

Weekly Bulletin

LEADERSHIP MESSAGE:

As we come to the end of another wonderful year, we want to take a moment to thank you for your ongoing support, and to celebrate the incredible achievements of our students. This year has been filled with growth, learning, and memorable moments. Whether in the classroom, on the sports field, through creative projects, or in everyday acts of kindness, our students have continued to amaze us with their curiosity, resilience, and spirit. None of this would be possible without the partnership of our families. Your encouragement and involvement have made a lasting impact, and we're truly grateful. Thank you for being part of this journey. We're so proud of what our students have accomplished and excited for all that's to come. Wishing you and your family a joyful, restful break and a bright start to the new academic year!

PARENT NOTICES:

End of Summer term: Friday 18th July

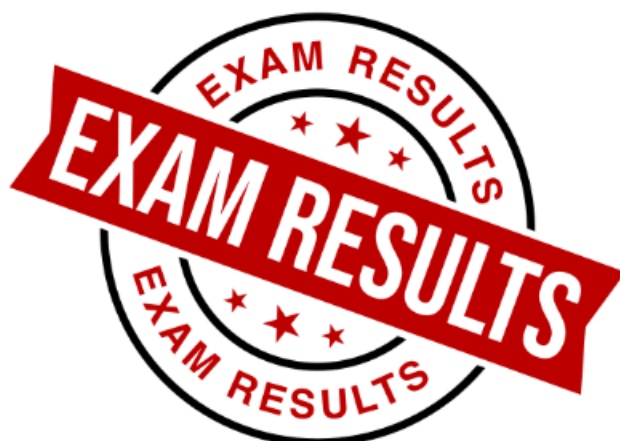
Students return date (Autumn term) : Wednesday 3rd September

WEEK ENDING 18.07.2025

Longdon



Weekly Bulletin



**Please join us between 11am - 1pm
on Thursday 21st August 2025 at
Longdon Hall School to collect your
child's GCSE Results!***

***If you have arranged for postal / email results
these will be sent out before 11am on 21/08/25**

JCQ guidance: can anyone wishing to collect results via email please contact lizzie.sowden@longdonhallschool.co.uk with the student's personal email as they have to be sent to the student personally and not the parent / carer, thanks.

WEEK ENDING 18.07.2025



Longdon

Weekly Bulletin



Well done to all this year! It has been an exceptional year,
and I wish everyone a restful and healthy summer! I look
forward to seeing everyone in September.

WEEK ENDING 18.07.2025



Longdon

Weekly Bulletin

CURRICULUM UPDATES:



‘Go Ape’

An amazing day out exploring nature at it's best the young adventurers and staff embarked on an exhilarating journey on the treetops.



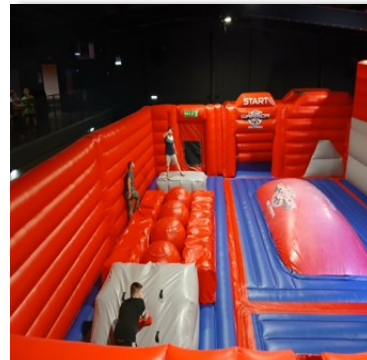
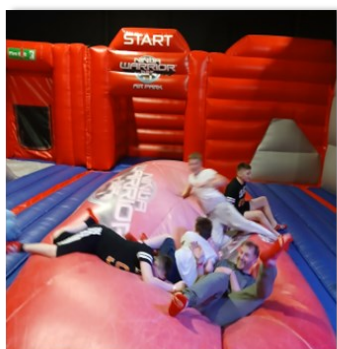
WEEK ENDING 18.07.2025



Longdon

Weekly Bulletin

CURRICULUM UPDATES:



Do you have what it takes to be a Ninja Warrior?

Students had an amazing day tackling the fun-packed courses and inflatables inspired by the hit ITV show.

Students loved jumping, bouncing and having the freedom to move freely!

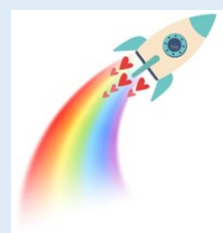
WEEK ENDING 18.07.2025

Longdon



Weekly Bulletin

BLAST Summer 2025 Sessions - Craft, Lego, Sensory toys & Support for Your Family



Dear Parent/Carer,

Is your child autistic, or starting on an autism assessment pathway?

If you're feeling uncertain, have questions, or just don't know where to begin - our Summer Fun sessions are designed with you in mind.

We know how it feels when autism is first mentioned. We know it can take years for assessments for children in Staffordshire. Most importantly, we know you don't need to wait for a diagnosis to get support and connect with other families.

When & Where: Four Friday sessions in August

Family Hub, Purcell Avenue, Lichfield, WS13 7PH 1st August, 8th August, 22nd August:
10:00-11:30am | 29th August : 1:00-2:30pm

Activities for Children (ages 4-12): Craft /Lego building and free play areas/
Sensory toys and specialist equipment/Social time and peer connections

Support for Parents:

- **No diagnosis required** – suitable for those awaiting assessments
- Small groups so you won't get lost in the crowd
- Meet other parents who understand exactly what you're going through
- Safe space to ask questions (they're never silly!) - Learn from families who've been where you are now

WEEK ENDING 18.07.2025



Longdon

Weekly Bulletin

What Happens After: We don't just offer sessions and disappear. We'll help connect you to:

- Our BLAST SOS parent program for ongoing support
- Information about local services and how to access them
- Other families and support networks
- Resources to help you understand and navigate the systems

Booking Information: £4 per child, £1 per adult - great value for families! Family Hub Free Pass holders welcome but must still book in advance. Book one session, or all four to really connect with our community. Thank you to We Love Lichfield for their support.

Important: These sessions fill up quickly. Book early to secure your spot.

BOOK NOW:

<https://blast-burntwood-and-lichfield-autism-support-together.sumupstore.com/>

You don't need to have everything figured out to join us. In fact, that's exactly why we're here.

With understanding, The BLAST Team

P.S. Already part of our BLAST community? These sessions are perfect for summer fun and connecting with new families too!

Thank you to BLAST volunteers, We Love Lichfield, Newlife and the Family Hub for supporting this event.

WEEK ENDING 18.07.2025



Longdon

Weekly Bulletin

Please see attached notices from the LA for activities
over the school summer holiday.



Circuit Training **Kickboxing** **Yoga**

Lichfield
Family Hub
Purcell
Avenue
WS13 7PH

FREE

FAMILY FUN FITNESS CLASS

Age 2+ all abilities
Session 1: 9:30-10:20
Session 2: 10:30-11:20

THURSDAY 21ST AUGUST 2025

A one of a kind experience in your local area!



Limited spaces available

BOOK NOW >>

Call, text or
email

07931168672

www.mamauk.co.uk  @mama uk  @mindfulnessmartialarts


Info@mamauk.co.uk

WEEK ENDING 18.07.2025

Longdon



Weekly Bulletin



Monday Playgroup

A FREE group with fun activities for babies and toddlers aged 0-4 years
Every Monday during the summer holidays
1.30-2.30pm

Please book ahead by contacting Esther
at esther.glaser@staffordshire.gov.uk

Lichfield Family Hub
Purcell Avenue
WS13 7PH



MONDAY 4TH AUGUST
10AM - 12PM

SEND EQUIPMENT LENDING LIBRARY LAUNCH EVENT!

TRY BEFORE YOU BUY!
COME ALONG AND TRY OUT OUR
SENSORY EQUIPMENT AT OUR
LENDING LIBRARY LAUNCH.

LOTS OF NEW SENSORY ITEMS AND SEND
EQUIPMENT FOR YOU TO COME AND TRY BEFORE
YOU HIRE

• 1 WEEKS HIRE FOR UNDER £5 •

LICHFIELD FAMILY HUB
PURCELL AVENUE
WS13 7PH



WEEK ENDING 18.07.2025



Longdon

Weekly Bulletin



S.E.N. FAMILY SWIM



**BURNTWOOD LEISURE CENTRE
WEDNESDAYS 1-2PM**

**THIS IS A SESSION SPECIFICALLY FOR THOSE WITH
ADDITIONAL NEEDS AND THEIR FAMILIES
THROUGHOUT THE SUMMER HOLIDAYS.**

**CALL 01543 672439 FOR MORE INFO OR JUST TURN
UP.**

£5 PER FAMILY

SUMMER STAY AND PLAY

At Lichfield Family Hub

COME AND JOIN US!

DATES:

WEDNESDAY 6TH AUGUST

WEDNESDAY 20TH AUGUST

TIME: 10-11.30AM

PLEASE CHOOSE ONE SESSION
ONLY

WHY PLAY WITH US?

Come and enjoy a range of activities to keep you and your children busy over the summer holidays. The sessions will be suitable for 0-10 year olds.

Booking is essential. Please email esther.glaser@staffordshire.gov.uk to book your place.

We look forward to seeing you!

FREE EVENT!



WEEK ENDING 18.07.2025

Longdon



Weekly Bulletin

Eastern Avenue, Lichfield, WS13 6RH
10am - 3pm

FREE
SUMMER HOLIDAY
FUN FOR EVERYONE!
PROGRAMME



FOR YOUNG PEOPLE WITH S.E.N.D & NEURODIVERSE AGED 8+

INCLUSIVE SPORTS



28th July - 1st Aug: WEEK 1
Liberty HAF & SPACE Summer Programme

4th Aug - 8th Aug: WEEK 2
Liberty HAF & SPACE Summer Programme

FUN ACTIVITIES



CREATIVE ARTS COOKING & BAKING COMPETITIONS



INCLUSIVE FOOTBALL



FRIDAY FUN PARTY WITH SINGER LIAM CARNELL AND MORE FUN



HOLIDAY
Activities
AND FOOD

I HAVE A HAF CODE
SCAN TO BOOK!



Week 1

I DO NOT HAVE A HAF CODE.
I AM BOOKING THROUGH
SPACE
SCAN TO BOOK!



Week 2



Week 1

- Inclusive football and open theatre
- DIY sunglasses, rock painting, beaded wind chimes, sensory bottles, frozen paint, natural tie-dye, slime, and textiles.
- Special workshops include a Makaton workshop on Wednesday.
- Beachball volleyball, balloon tennis, Minute to Win It challenges, water balloon target practice, water gun painting, flying egg challenge, and group games.

Food & Treats:

- Ice cream in a bag, fruit salads & smoothies, mini puff pastry hot dogs, sherbet.
- It's a week full of inclusive activities, hands-on creativity, tasty treats, and energetic play!

Week 2

- Daily martial arts sessions with MAMA UK.
- Creative workshops include fruit kebabs, ceramics, designing party hats.
- Outdoor fun features a treasure hunt, scavenger hunt, tug of war and lot's more.
- Theatre and performance take centre stage with drama workshops and a talent show.
- Midweek challenges like "I'm a Liberty Member, Get Me Out of Here"
- The week ends with a Party Day - complete with live music, party games and lot's more fun!

A perfect mix of creativity, teamwork, and celebration!

Website: <https://www.libertyjamboree.co.uk/>

Charity Number: 1185819

TO BOOK YOUR HAF & SPACE PLACE
PLEASE USE THE QR CODES ABOVE
FOR MORE INFO EMAIL MAGGI@LIBERTY-STAFFORDSHIRE.CO.UK
OR PHONE 07772 749 661



WEEK ENDING 18.07.2025

Longdon



Weekly Bulletin



**SUMMER
HOLIDAYS**

at Lichfield Family Hub

**Tuesday 22nd July and
Thursday 7th August**

check dates for times of sessions

**Tickets £5.00 for 1 child & 1 adult,
free for free pass members**

www.traintimeuklichfield.co.uk

michelle@traintimeuk.co.uk

scan to
book →



Health
is wealth



Family Hub
Staffordshire

Cost of Living & Your Financial Wellbeing



Lichfield Family Hub
Purcell Avenue
Lichfield
WS13 7PH

Come along and have a chat and
receive free advice

Small amount of food items,
nappies and baby milk available

**Thursday 31st July 10-12
&**

Friday 15th August 10-1



WEEK ENDING 18.07.2025

Longdon



Weekly Bulletin

CRAFT AND CRUMB SESSIONS AT LICHFIELD CATHEDRAL!

Monday 11th August - Friday 22nd August 2025

09:30 - 12:00 (weekdays only)

All ages welcome with parent supervision

T shirt designs, bracelet making, cartoon strips,
puppet making, board games and more!!

Breakfast and snacks available too

To book your place please email:
education@lichfield-cathedral.org

SEND information
and advice officer
will be available at
the session on

**Tuesday 19th - 09:30-
12:00**

The Old Stables at
Lichfield Cathedral, The
Close, Lichfield,
Staffordshire, WS13 7LD

Household Support
Fund Coach will be
available at the
session on **Monday
18th - 09:30-12:00**



WEEK ENDING 18.07.2025

Longdon



Weekly Bulletin



DISABILITY SWIMMING SESSION



**BURNTWOOD LEISURE CENTRE
FRIDAYS 2-3PM**

**THIS IS A SESSION SPECIFICALLY FOR THOSE
WITH ADDITIONAL NEEDS AND THEIR CARERS.**

**CALL 01543 228229 FOR MORE INFO OR JUST
TURN UP.**

£5 PER PERSON (CARER GOES FREE)



FRIARY GRANGE LEISURE CENTRE

FREE FAMILY SWIM

**SUNDAYS
9-10:30AM**

LICHFIELD FAMILY HUB PASS HOLDERS ENTER FOR
FREE. £5 FOR NON ELIGIBLE FAMILIES

Pass holders - please bring proof of
membership

Family: 2 adults & 2 children, any extra will cost
£3pp

Call Friary Grange leisure centre for more info
on 01543 228229.



WEEK ENDING 18.07.2025

Longdon



Weekly Bulletin

DRAMA SUMMER SCHOOL

TUESDAY 26 – FRIDAY 29 AUGUST

UNLEASH YOUR CREATIVITY AND JOIN US FOR A WEEK OF THEATRICAL FUN, WHERE WE'LL SPEND OUR TIME TOGETHER PLAYING DRAMA GAMES AND DEVISING A BRAND-NEW PERFORMANCE.

AGES 11-14
(SCHOOL YEARS 7-9)

9.30AM-1PM
AT THE FAMILY HUB

AGES 14-18
(SCHOOL YEARS 10-13)

2PM-5.30PM
AT THE LICHFIELD GARRICK



THE DRAMA SUMMER SCHOOL IS OPEN TO EVERYONE, YOU DON'T NEED TO BE AN EXPERIENCED PERFORMER.

IT IS IDEAL FOR BUILDING **CONFIDENCE, COMMUNICATION, TEAMWORK, AND PERFORMANCE SKILLS.**

**FREE
TO ATTEND**



**LICHFIELD
GARRICK**
THEATRE & STUDIO

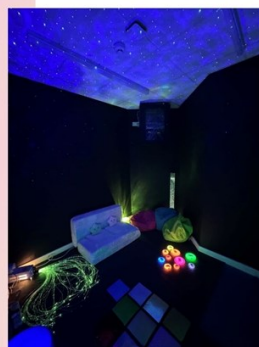
EMAIL COMMUNITY@LICHFIELDGARRICK.COM
OR CALL 01543 412115 WITH ANY QUESTIONS.

PLEASE BOOK YOUR
PLACE IN ADVANCE

lichfieldgarrick.com/summerschool

Summer Sale

21st July- 31st August



£1 Per Hour
Max 4 People



Lichfield Family Hub
Purcell Avenue
Lichfield
WS13 7PH
01543 512024

WEEK ENDING 18.07.2025



Longdon

Weekly Bulletin

Burntwood
TOWN COUNCIL

BONEY HAY
BURNTWOOD
CHASE TERRACE
CHASETOWN

PLAY IN THE PARKS

FREE fun for children and families. Free fairground ride, inflatables, face painter, craft activities & more

Mondays & Wednesdays 
throughout the summer holidays

11am – 3pm 

Supported by



THE
NOEL SWEENEY
FOUNDATION

Mon 28th July, Chase Terrace Park
Weds 30th July, Redwood Park



ST ANNE'S
CHURCH
CHASETOWN

Mon 4th Aug, Burntwood Leisure Centre
Weds 6th Aug, St Annes Church, Chasetown

Mon 11th Aug, Burntwood Park



**Burntwood
Spark**
bright beginnings

Weds 13th Aug, Spark at Springhill Academy



St John's
Community
Church

Mon 18th Aug, St Matthews Cricket Club

Contact us:
01543 677166
info@burntwood-tc.gov.uk
www.burntwood-tc.gov.uk

London



Weekly Bulletin

hello velo

Saturday 21 June 2025
 📍 Beacon Park, Lichfield
 11am-4pm

Saturday 19 July 2025
 📍 Burntwood Leisure Centre
 at Burntwood Wakes
 12pm-4pm

Free to participate!

Scan to find out more

Active
 LICHFIELD DISTRICT
 COMMUNITIES

 **Lichfield**
 District Council

STREETVEL ODROME

WEEK ENDING 18.07.2025

Longdon



Weekly Bulletin



Funded by Staffordshire Commissioner for Police,
Fire & Rescue and Crime and supported by partners



Scan me ↴

Free activities for 8-17 year-olds
during the school holidays



www.staffordshirespace.co.uk



@StaffsSpace



StaffsSpace



StaffsSpace



WEEK ENDING 18.07.2025

Longdon



Weekly Bulletin



Lichfield
District Council

Lichfield District Council, Active Lichfield Communities Team are offering access to FREE leisure activities and sessions over the summer for young people aged between 8 and 17, funded by Staffordshire Commissioner's Office SPACE scheme.

What's on Offer

- Unlimited swimming at public swimming times
- Floats and Fun Swimming Sessions
- Off peak court hire, tennis, badminton, squash and table tennis
- Getin2it for young people summer activities
- Getin2it Skatepark Tuition Days
- Getin2it Kickboxing sessions with M.A.M.A
- SPACE Rock-climbing Session
- SPACE Inflatable Fun Session
- *Disc & Foot Golf in Beacon Park
- *Crazy Golf in Beacon Park
- *Petanque in Beacon Park

*Please note that some activities in beacon park may require a small refundable deposit for equipment.

Activities and sessions will run at :

Burntwood Leisure Centre
Friary Grange Leisure Centre
Beacon Park

Various parks, open spaces and community centres across the District.



SPACE Leisure Passes are Valid throughout the summer holiday from **Monday 28 July to Friday 29 August 2025.**

Terms and conditions apply.

Please contact the leisure centres for Swimming timetables and court hire, Beacon Park for the Disc / Foot Golf and Crazy Golf Hire & Active Lichfield Communities for all Getin2it summer activities to find out activity times.

Getin2it Summer Activities



For Getin2it Summer Holiday Programme please scan this QR code or go to the Holiday Fun section on the Active Lichfield website.



Contact us for more info

01543 308835

✉ sportsdevelopment@lichfielddc.gov.uk



Active Lichfield



Active Lichfield



Active Lichfield



activelichfield.co.uk